



Hawaii Tropical Fruit Growers Annual Meeting

Kathy King

State Statistician

USDA, NASS, Hawaii Field Office

September 23, 2017



NASS Mission



Mission Statement:

NASS provides timely, accurate, and useful statistics in service to U.S. agriculture.

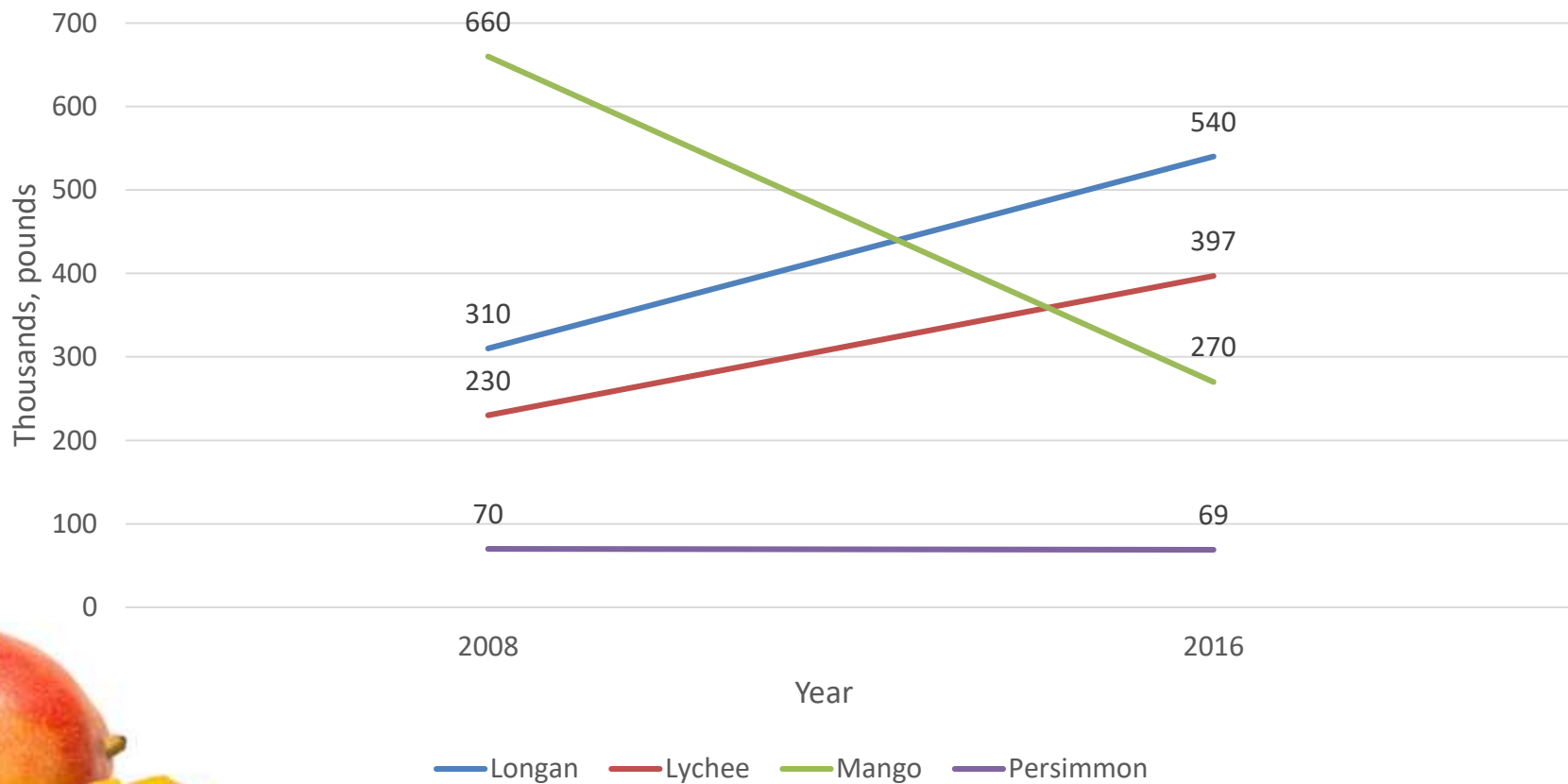
(and Hawaiian agriculture too!)



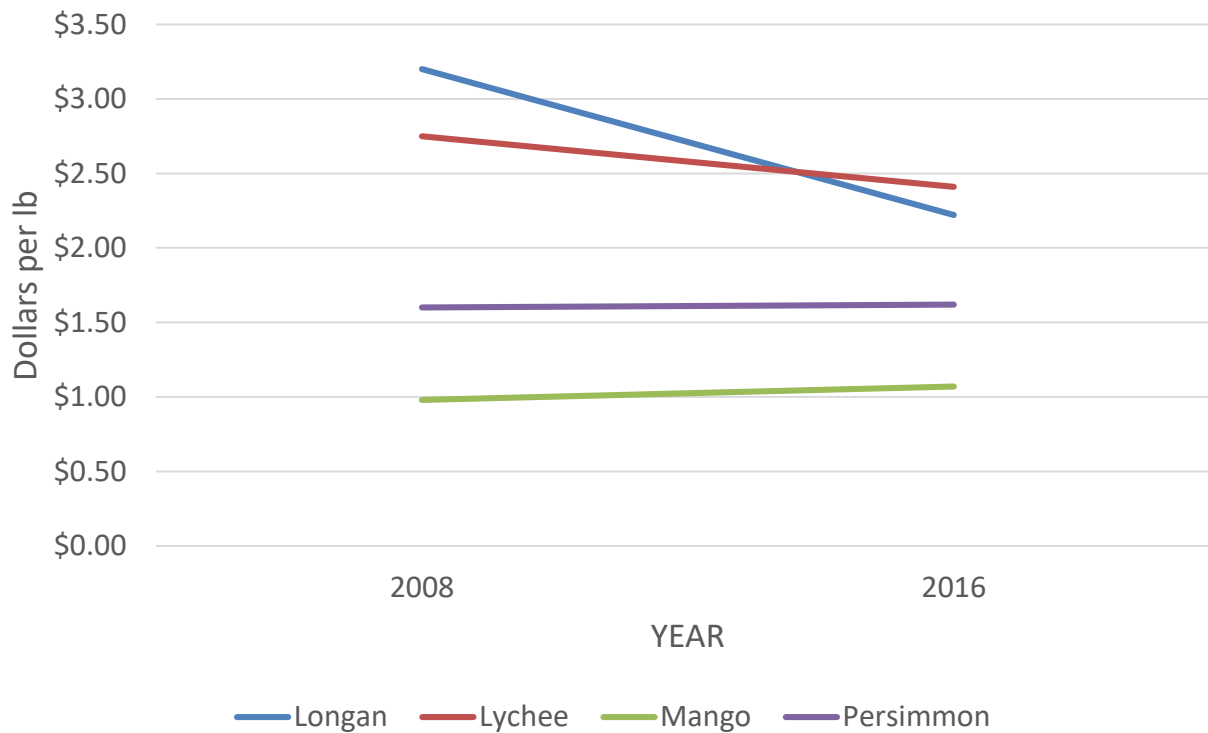
- Tropical Specialties Survey
 - Included all fruits from surveys pre-2009
 - Added some commodities that have not been surveyed before:

Cashews	Tea
Galangal	Turmeric
Mamaki Tea	Vanilla
Moringa	

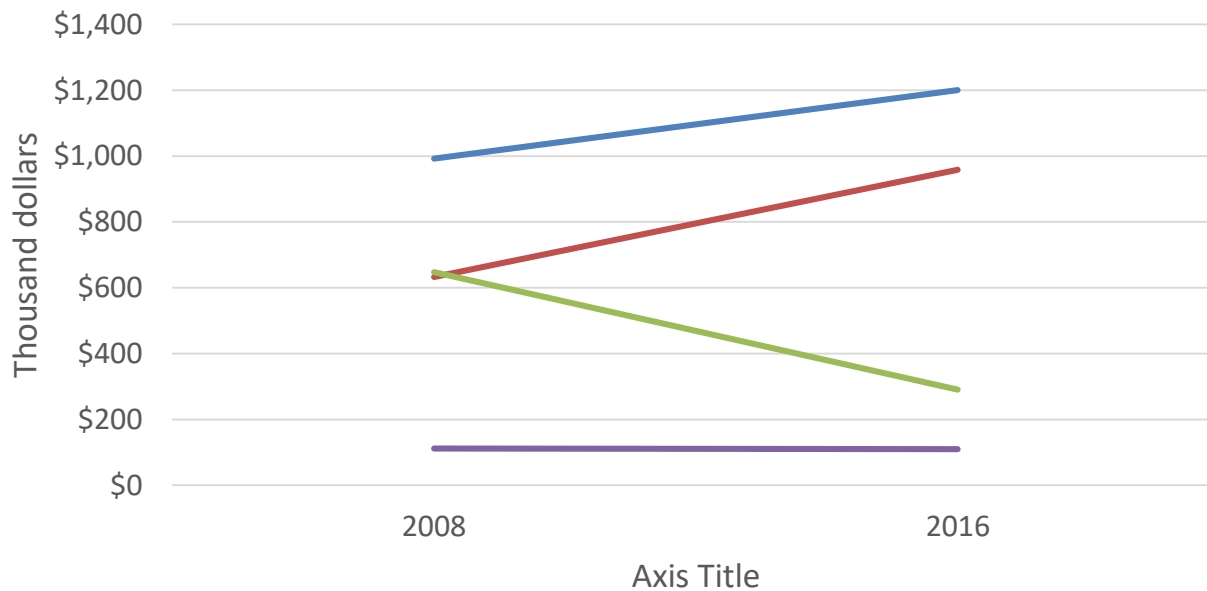
SELECTED FRUIT PRODUCTION, 2008 and 2016



SELECTED FRUIT PRICES, 2008 and 2016



VALUE OF SALES, SELECTED FRUITS, 2008 AND 2016



— Longan — Lychee — Mango — Persimmon

Some interesting points...

- Highest price per lb for a citrus fruit
 - \$1.75 for Kumquat
- Highest price per lb for a tropical fruit
 - \$5.84 for Poha Berry
- Highest price per lb for a tropical specialty
 - \$6.73 for Vanilla





Other interesting facts...



- Ginger Root 2016

- Production 730,000 lbs
- Price \$2.33/lb
- Value of Sales \$1,700,000

- Ginger Root 2007

- Production 1,800,000 lbs
- Price \$1.60/lb
- Value of Sales \$2,880,000



Tropical Specialties Release



- For the full report, go to our website:
 - [https://www.nass.usda.gov/Statistics by State/Hawaii/index.php](https://www.nass.usda.gov/Statistics_by_State/Hawaii/index.php)

- NASS conducts surveys of various agricultural products:

- Flowers
- Coffee
- Cattle
- Mac nuts
- Vegetables/fruits
- Etc.



- Part of the survey process is assigning a “value” to the commodity

- For Hawaii's specialty crops, NASS "turns in" these values to USDA'S Economic Research Service
 - Who then sums up all the values reported;
 - And then releases the total value of specialty crops for each state
- That "total value of specialty crops" is combined with all the other states
- Result: The "total value of specialty crops" for the United States



Fiscal Year 2016 SCBGP amounts



State Department of Agriculture	Available Grant Allocation
Alabama	\$ 337,282.42
Alaska	212,792.61
American Samoa	251,046.44
Arizona	916,705.61
Arkansas	294,436.89
California	22,338,749.72
Colorado	626,593.76
Connecticut	269,810.27
Delaware	302,856.05
District of Columbia	208,776.33
Florida	3,879,382.30
Georgia	1,070,978.39
Guam	210,935.95
Hawaii	422,661.60
Idaho	1,902,564.60
Illinois	521,570.34
Indiana	383,644.54
Iowa	244,352.23
Kansas	283,492.81
Kentucky	241,199.97
Louisiana	314,385.77



2017 CENSUS OF AGRICULTURE

There's Strength in Numbers

February 2017

Presented by: Kathy
King



2017 CENSUS OF
AGRICULTURE
YOUR VOICE. YOUR FUTURE. YOUR OPPORTUNITY.

United States Department of Agriculture
National Agricultural Statistics Service

www.agcensus.usda.gov

Census of Agriculture 2017

A complete count, taken every five years, of America's farms and ranches and the people who operate them.



United States Department of Agriculture
National Agricultural Statistics Service

www.agcensus.usda.gov

Census of Agriculture 2017 (cont.)

Farms and Ranches

- The Census of Agriculture provides
 - Number of farms and ranches
 - Crop acreage
 - Livestock data
 - Expenses
 - Profit/Loss data

County numbers

- It is the only source of county data for Hawaii since the NASS reorganization.



Census of Agriculture 2017 (cont.)

- Mailing is done in December of 2017
- Response is requested by February of 2018
 - Though data collection usually continues into June
- Full release of data occurs in February of the next year (usually)

There's Strength in Numbers



United States Department of Agriculture
National Agricultural Statistics Service

www.agcensus.usda.gov

- Your personal data is ALWAYS confidential

Your data is exempt from a FREEDOM OF INFORMATION ACT request.

